

College Bound Students at St. Paul's School

I know I am going to college; what else do I need to know?

Christine Y. Woodard, LCSW, ACSW, BACS
9th Grade Counselor & Early College/Career Advisor

Renée P. Miller, M.Ed., NCC, NCSC
12th Grade Counselor & College Advisor

985.892.3200 x4102 (phone)

985.892.9916 (fax)

christinew@stpauls.com

What's the goal?

Different criteria for different outcomes

High School Graduation

- SPS requirements &
- State of LA requirements

TOPS & TOPS Tech Scholarship Eligibility

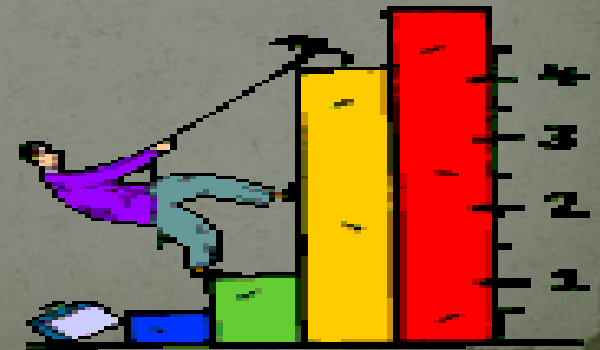
- Specific courses/19 units
- 2.5 TOPS core GPA (minimum)
- 20 ACT (subject to change annually)

University Admissions

- Specific courses
- Minimum GPA and ACT (may differ at each university)

NCAA (Athletic Eligibility)

- NCAA approved core courses for DI and DII colleges
- Eligible core GPA and test score combination



SPS Course Selection



Colleges expect:

- students to select their appropriate level of study based on test performance, initiative, ability, etc.
- students to exhaust the college prep options on their high school campus; colleges compare the student's transcript to the high school profile.
- AP courses may be desired in highly selective admission universities. Subsequent AP test scores are meaningful to the admissions personnel in comparing apples to apples. Some highly selective colleges literally may count the number of AP courses on a student's transcript.

Honors?



AP Courses?



Core Curriculum for High School graduates of 2014 thru 2017

For the Opportunity, Performance, and Honors Awards

Units	Courses (Advanced Placement (AP) courses with the same name as a course listed in the TOPS Core Curriculum may be substituted.)
ENGLISH = 4 Units	
4	English I, II, III, & IV
MATH = 4 Units	
1	Algebra I, or Integrated Mathematics I, or Applied Algebra I or Algebra I - Parts 1 & 2 (two units) or Applied Mathematics I & II (two units) or Applied Algebra 1A and 1B (two units)
1	Algebra II or Integrated Mathematics II
2	Geometry, Applied Geometry, Pre-Calculus, Advanced Math-Pre-Calculus, Calculus, AP Calculus AB, Advanced Math-Functions and Statistics, Probability and Statistics, Discrete Mathematics, Applied Mathematics III, Integrated Mathematics III, or Algebra III
SCIENCE = 4 Units	
1	Biology I or II
1	Chemistry I or II, or Chemistry Com
2	Earth Science, Physical Science, Environmental Science, Integrated Science, Biology II, Chemistry II, Physics, Physics II, Physics for Technology I or II, AP Physics C: Electricity & Magnetism, AP Physics C: Mechanics, or Anatomy and Physiology or both Agriscience I & II (both for 1 unit)
SOCIAL STUDIES = 4 Units	
1	American History
1	Civics and Free Enterprise (1 unit combined), Civics (1 year), or AP Government and Politics: United States
2	World History, Western Civilization, World Geography, European History or History of Religion
FOREIGN LANGUAGE = 2 Units	
2	Foreign Language (2 units in the same language)
FINE ARTS = 1 Unit	
1	Fine Arts Survey or 1 unit of a performance course in music, or dance, or theater or 1 unit of studio art or 1 unit of visual art or both Speech III & IV (both for 1 unit)
19	Total



Core Curriculum for High School graduates of 2018 and thereafter

For the Opportunity, Performance, and Honors Awards

Units	Courses
ENGLISH = 4 Units	
1 Unit	English I
1 Unit	English II
1 Unit from the following:	English III, AP English Language Arts and Composition, or IB English III (Language A or Literature and Performance)
1 Unit from the following:	English IV, AP English Literature and Composition, or IB English IV (Language A or Literature and Performance)
MATH = 4 Units	
1 Unit	Algebra I
1 Unit	Geometry
1 Unit	Algebra II
	(Integrated Mathematics I, Integrated Mathematics II, and Integrated Mathematics III may be substituted for the Algebra I, Geometry, and Algebra II sequence)
1 Unit from the following:	Algebra III; Advanced Math - Functions and Statistics, Advanced Math - Pre-Calculus, Pre-Calculus, or IB Math Methods I (Mathematical Studies SL); Calculus, AP Calculus AB, or IB Math Methods II (Mathematics SL); AP Calculus BC; Probability and Statistics or AP Statistics; IB Further Mathematics HL; IB Mathematics HL
SCIENCE = 4 Units	
1 Unit	Biology I
1 Unit	Chemistry I
2 Units from the following:	Earth Science; Environmental Science; Physical Science; Agriscience I and Agriscience II (one unit combined); Chemistry II, AP Chemistry, or IB Chemistry II; AP Environmental Science or IB Environmental Systems; Physics I, AP Physics B, or IB Physics I; AP Physics C: Electricity and Magnetism, AP Physics C: Mechanics, or IB Physics II; AP Physics I and AP Physics II; Biology II, AP Biology, or IB Biology II
SOCIAL STUDIES = 4 Units	
1 Unit from the following:	U.S. History, AP U.S. History, or IB U.S. History
½ Unit from the following:	Government, AP U.S. Government and Politics: Comparative, or AP U.S. Government and Politics: United States
½ Unit from the following:	Economics, AP Macroeconomics, or AP Microeconomics
	(one unit of Civics may be substituted for the two ½ Units above)
2 Units from the following:	Western Civilization, European History, or AP European History; World Geography, AP Human Geography, or IB Geography; World History, AP World History, or IB World History; History of Religion; IB Economics
FOREIGN LANGUAGE = 2 Units	
	Foreign Language, both units in the same language, which may include the following: AP Chinese Language and Culture, AP French Language and Culture, AP German Language and Culture, AP Italian Language and Culture, AP Japanese Language and Culture, AP Latin, AP Spanish Language and Culture, IB French IV, IB French V, IB Spanish IV, and IB Spanish V
ART = 1 Unit	
1 Unit from the following:	Performance course in Music, Dance or Theatre; Fine Arts Survey; Art I, II, III, and IV; Talented Art I, II, III, and IV; Talented Music I, II, III and IV; Talented Theater Arts I, II, III, and IV; Speech III and Speech IV (one unit combined); AP Art History; AP Studio Art: 2-D Design; AP Studio Art: 3-D Design; AP Studio Art: Drawing; AP Music Theory; IB Film Study I; IB Film Study II; IB Music I; IB Music II; IB Art Design III; IB Art Design IV; or IB Theatre I
TOTAL = 19 Units	



More TOPS pieces...

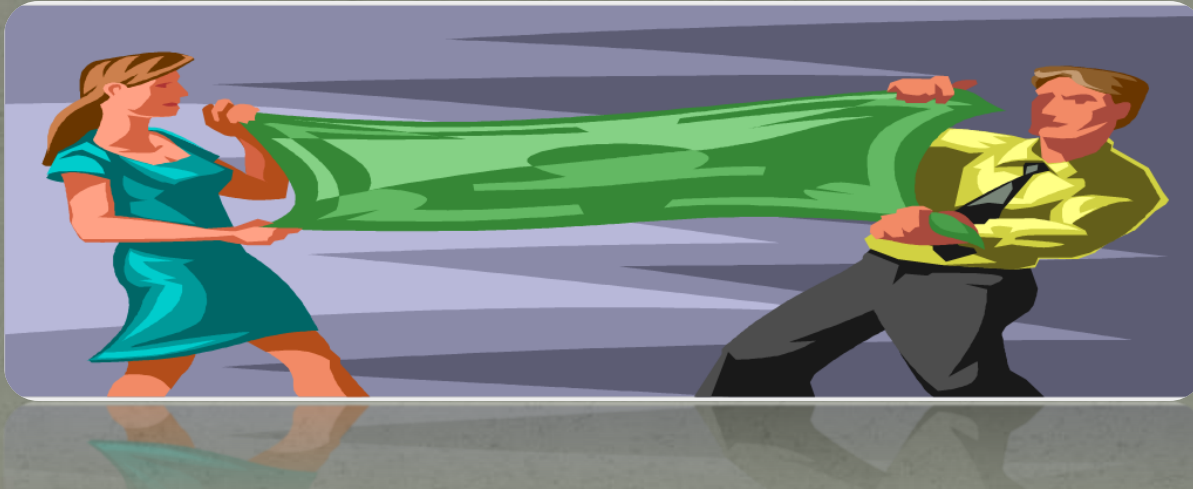
- You must apply for TOPS either by submitting a FAFSA or by using the TOPS application on the state financial aid website www.osfa.state.la.us/
- You must apply for TOPS prior to the state deadlines even if you have been granted extensions for your income taxes.
- TOPS is a living program that can and will change periodically; do not make assumptions .

TOPS



- TOPS **never** rounds a GPA. 2.49999999... is **not** a eligible TOPS GPA.
- TOPS Opportunity, Performance, and Honors Awards- three levels
- http://www.osfa.la.gov/MainSitePDFs/TOPS_OPH_brochure_8-11.pdf

Doesn't TOPS cover all college costs?

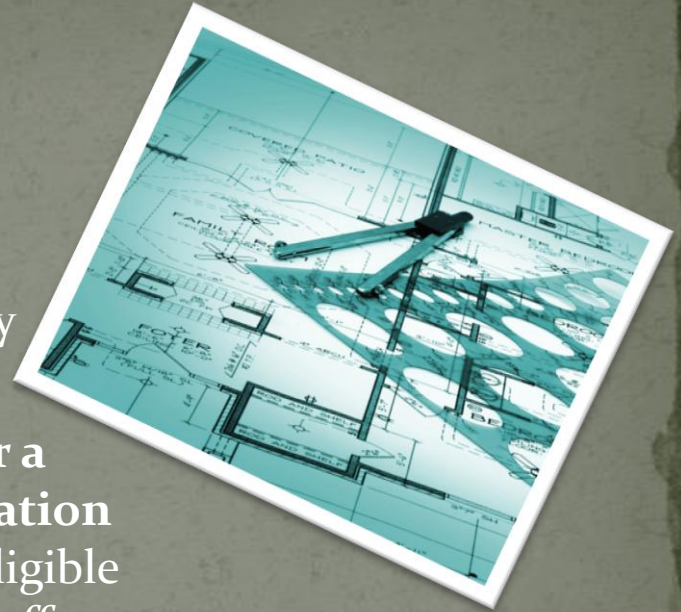


- A TOPS eligible student will have an outstanding balance at **any** institution in the form of fees, books, housing, meal plans.
- TOPS awards may be used in those colleges and universities that are members of the Louisiana Association of Independent Colleges and Universities.

TOPS Tech Award



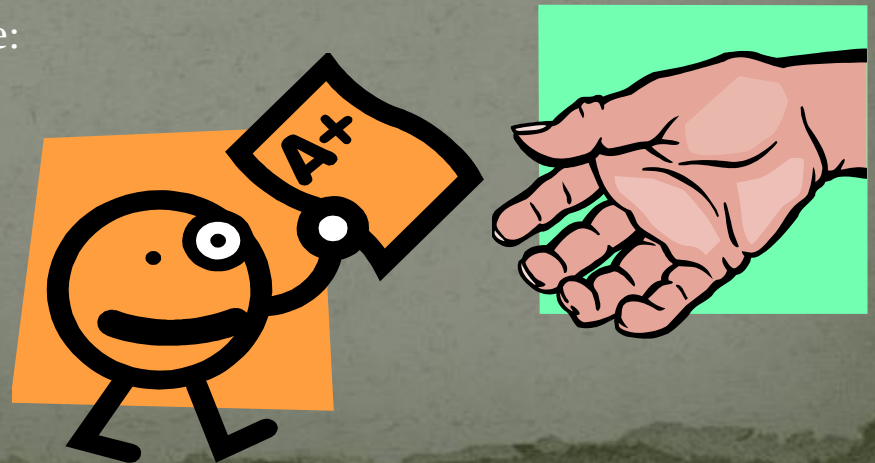
- The TOPS Tech Award may be used only to enroll in a nonacademic program for a vocational or technical education certificate or a diploma at any eligible postsecondary institution that offers such courses. This includes the Northshore Technical College campuses, some public colleges and universities, and some of those colleges and universities that are members of the Louisiana Association of Independent Colleges and Universities.



GPA's



- Some LA colleges and universities may use the TOPS core GPA's when an in-state student applies; the student's application serves as 'permission' to access that student's account.
- For FALL 2014 at LSU, Incoming Freshmen interested in admission to LSU must have a 3.0 unweighted academic GPA based on 19 core units. Additionally, students must meet an ACT or SAT requirement. The ACT requirement consists of a 22 composite score, with an 18 English subscore and a 19 math subscore. The SAT requirement consists of a 1030 critical reading and math composite score, with a 450 critical reading score and a 460 math score.
- For out of state, private, and highly selective admissions universities (those whose admit rate is <50%) there are almost as many different uses and calculations for GPA's used in the admissions process as there are colleges. For the most part, colleges will only be looking at grades earned in core classes, as well as rigor of the classes, for admission and scholarship consideration GPA's.
- The GPA used for admissions may not be the same used for scholarship consideration.
- Some common GPA practices may include:
 - Core GPA submitted
 - Cumulative GPA submitted
 - Core GPA recalculated



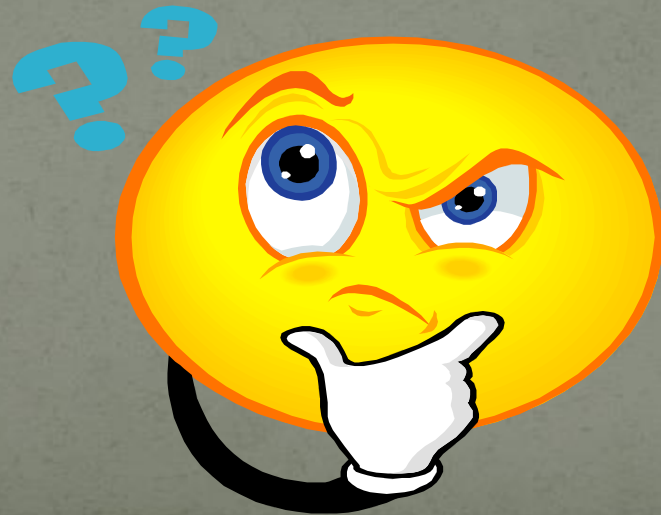
Extracurricular/ Community Service



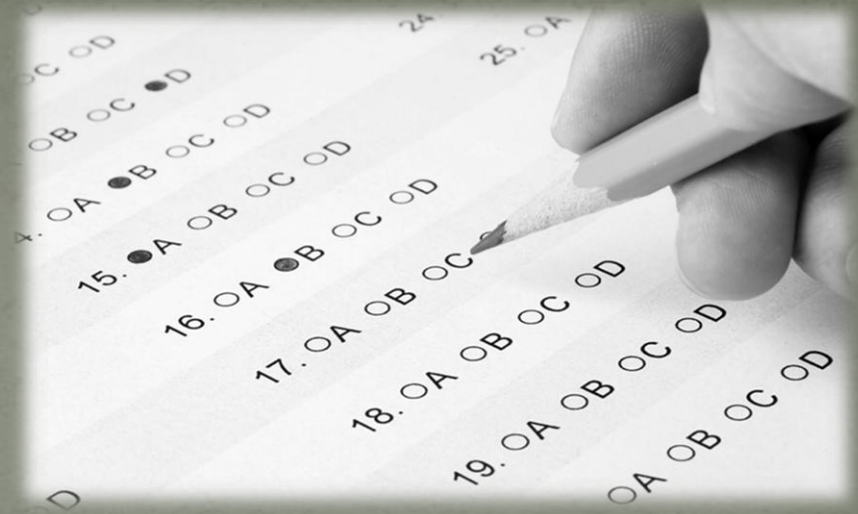
- This is a critical component in highly selective admissions colleges &/or special programs.
- **The rule of thumb is depth, not breadth.** Twenty club memberships or affiliations is not nearly as enticing as a student who has selected far fewer meaningful activities and demonstrated a much deeper level of energy and time commitment.
- For those programs for which this is a serious consideration, they will request a quantifiable representation: how many hours per day; days per week; weeks per year? Their perspective is anyone can join and passively attend meetings.....so what did *this* student do that is different or distinguishable? Was he an officer, was it a competitive process, has he earned any awards as a result, etc.

How are the test scores used?

Every college has its own formula for reviewing and using the college admissions test scores. Scores are often used for admissions decisions, scholarship consideration, and/or placement in core classes.



When do I take my ACT or SAT?



- The companies who create both ACT and SAT recommend that students take the test in the **spring semester of their Junior Year.**
 - Since the ACT is offered each year in September, October, December, February, April, and June, students still have many test-taking opportunities if they wait until they are well into their junior-level courses.

Standardized Testing



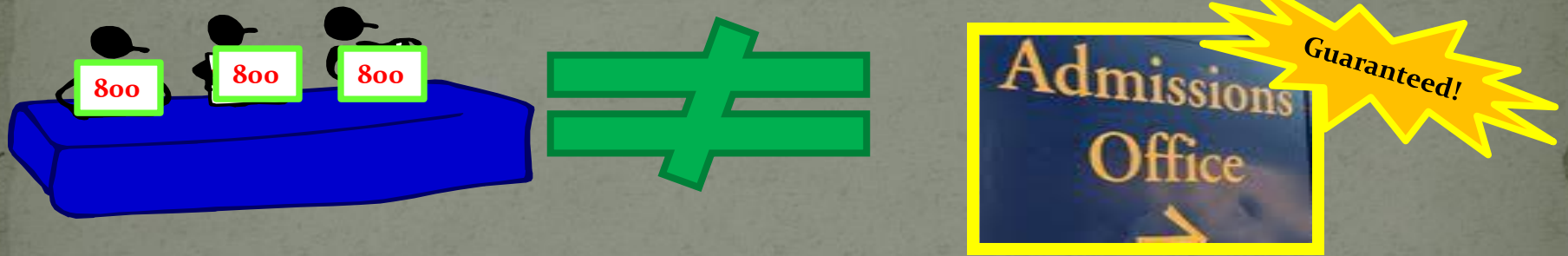
versus



- While some colleges are moving to a model that does not require admissions testing, it is still a widely accepted practice for admissions and scholarship consideration.
- The publishers of both the ETS and College Board recommend that students begin ACT or SAT testing in their junior year. ETS (ACT) bases its content predominately on junior and senior level courses. College Board (SAT) recommends second semester junior-year testing saying that a student's cognitive development, necessary to optimize performance, is more developed in the latter part of their high school years.
- It is common practice for students to take ACT or SAT multiple times due to the relationship of their score and the scholarship structure of a university.
- Some colleges super-score multiple ACT's; some take the highest single-sitting ACT composite score. Great Question to ask colleges on an official visit...

Standardized Testing- cont'd

- A perfect (or exceedingly high) test score will NOT mitigate an abysmal GPA; it only points out the discrepancy between ability and achievement.

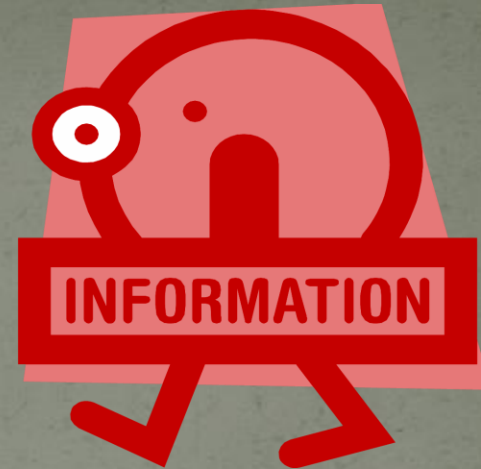


- **PSAT** is the portal for National Merit Scholarship competition. SPS will administer on **WEDNESDAY, October 16, 2013**.
- Correlations for **EXPLORE (9th) to PLAN (10th) to ACT (11th & 12th)** are exceedingly high; performance is very predictable. Score reports can be extremely helpful in high school course placement, skill identification (proficiency and deficits), college and career advisement, and preparation for subsequent testing.
- New Test at SPS: **ReadiStep for Pre-Freshmen/8th graders on October 18, 2013** - Correlations for **ReadiStep (8th) to PSAT (10th) to SAT (11th & 12th)**

What is the PSAT and why is it important?

- The PSAT/NMSQT (Preliminary SAT/National Merit Scholarship Qualifying Test) is co-sponsored by College Board and the National Merit Scholarship Corporation. It is the entrance test for National Merit Scholarship Competition. **Students in the 11th grade** are competing for the distinction of being named **National Merit Scholars**.
- The PSAT is offered only one Wednesday and one Saturday in the month of October each year. **The national test date at St. Paul's School is Wednesday, October 16, 2013.** Registration for this test is through the counseling department; no on-line registration is available. Seating is limited and students are accepted on a first come, first served basis!
- The PSAT/NMSQT is the best preparation for the SAT. Since the SAT *or* the ACT are used at most colleges as the admissions test, the PSAT offers an opportunity to forecast the SAT score. Using the results of the PLAN (a pre-ACT) from the sophomore year, and the PSAT in the sophomore year, an informed decision may be made as to which test may allow a student to maximize his scoring potential.
- More information about the PSAT may be found at **<http://www.collegeboard.com/parents/tests/meet-tests/21296.html>**

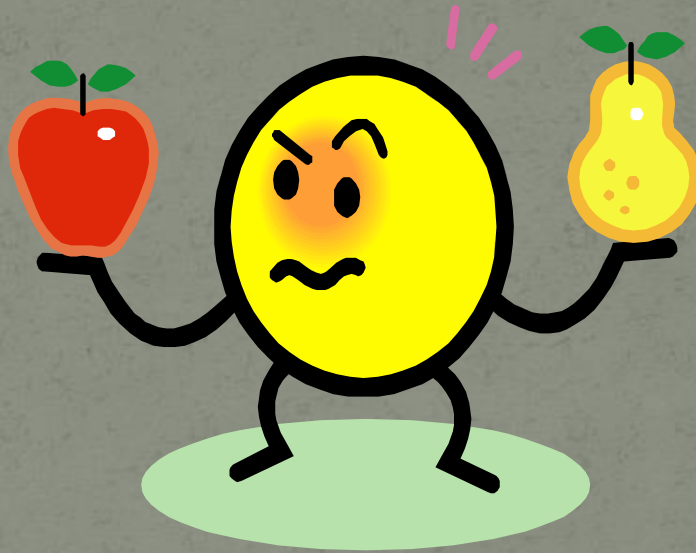
Admissions Tips cont.



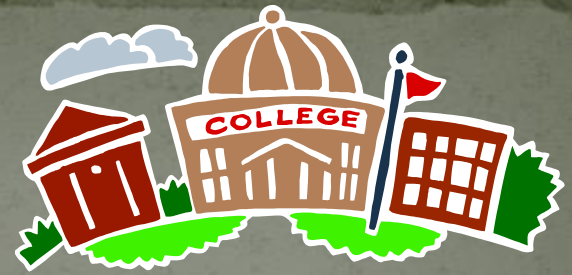
- College Admission Testing:
Many colleges accept either ACT or SAT. Ask the colleges that interest you which one they require. *Find out if SAT Subject Tests are needed as well.*

Choosing a college? Consider this...

- ✓ Admission requirements
- ✓ Cost
- ✓ Size
- ✓ Location
- ✓ Campus visit
- ✓ Housing
- ✓ Campus activities
- ✓ Sports
- ✓ Financial Aid
- ✓ Scholarships



Selection Process:



Step One (begins in 9th grade, if not already engaged)

- Students should be researching colleges and universities throughout high school. Meet with your 9th grade counselor!
 - Visiting college campuses
 - Attending college fairs
 - Reading websites to familiarize themselves with admission requirements of different types of schools, looking at deadlines, researching special programs, opportunities offered, and specific requirements
 - Evaluating and investigating their interests for possible majors and careers (talk with those currently in an area of interest, job shadowing, internships, volunteering, etc.)



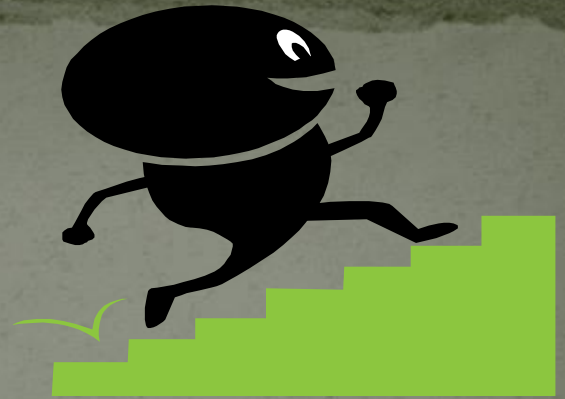
GETTING READY FOR COLLEGE ADMISSIONS

- College Admission Requirements ? YOU need to know!
 - The most accurate and updated info is on the college's website.
 - Interpret “recommended” as “required” for selective admission schools.
 - Review the college's current freshman class profile for good academic fits.
 - **Deadlines are not suggestions!!!**

Selection Process

Step Two: Using the information gained by Step One,

- create a list of potential colleges of interest
- delve deeper into the details of each. A university website AND the admissions officer/recruiter can be a tremendous help.
- Juniors and Seniors may make official visits. Students may request special activities when arranging an individual visit. The following, with the possible exception of an overnight stay on campus, are commonly available:
 - visiting class/es in the area of interest,
 - an appointment with someone from the department(s)/major of consideration,
 - an overnight stay on campus,
 - arrangements for auditions for special talent/interests,
 - tour of campus and housing options, and
 - an appointment with a financial aid officer.



Official COLLEGE Visits

Each college and university has a personality that is unique to its campus. The best way to explore It is to make an official visit. You are looking for what is called “a good fit.”

**ROAD TRIP!
WOOO HOOOO!!**



Best tip: Get out your grown up shoes and put **YOUR** best foot forward!



- Even though the college search and admissions process may be a team effort with you, your parents, and your counselor, remember that colleges and universities are admitting **YOU**. They need to see you in a responsible, take charge, independent, young adult role.

Man in Charge!



- Bottom line, regardless of the contact to colleges -- whether via email, phone calls, visits, or interviews -- **you** need to be the man in front! Your essay should be in *your* voice.

When do I apply for admissions?



- In the early fall of the senior year, applications are accepted for enrollment the following fall.
- In 2013, the Common Application was available on August 1st.
- NOTE: The deadlines for admissions and financial aid/scholarships are usually not the same, even if there is only one application for both. These are excellent questions for official visits.

Selection Process:



Step Three

- Apply
 - Online applications are encouraged and preferred
 - Applying early is encouraged and preferred; do not wait until the night before it is due!
 - Deadlines for admission, financial aid, and housing typically all have their own deadline and often times, separate applications
 - Some University “Scholarships” may also have their own separate applications

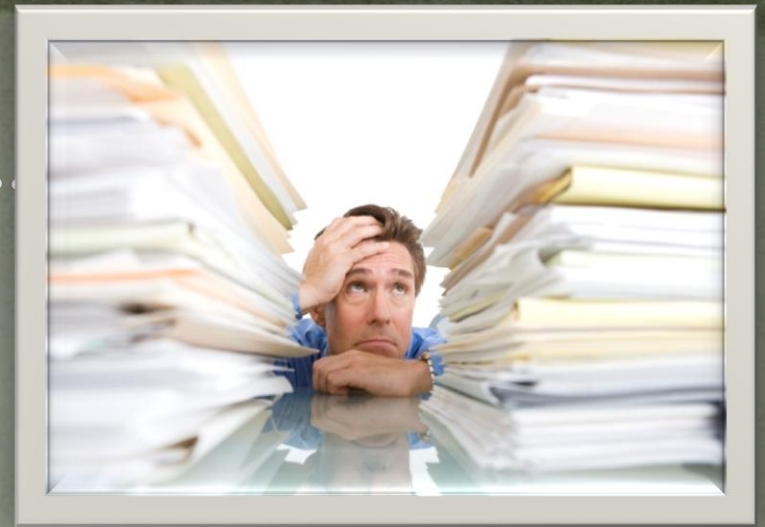
Now we are admitted.... Where's the \$\$\$\$\$?



- Any monies for college that do not come from the family may be collectively considered “**Financial Aid.**”
- There are numerous sources of financial aid
 - Federal government (grants; loans; work-study)
 - State government (i.e.. TOPS; Go Grant; LA Rehab Services)
 - Institution funds
 - Institution scholarships (incoming freshmen and department level)
 - Private scholarships (national and local)

University finance forms...

(Use your Financial Aid Office at your college of choice. They are the experts!)



- **Commonly required financial forms**

1. * **FAFSA (Free Application for Federal Student Aid)** -- file after January 1, student's senior year of high school, www.fafsa.ed.gov/.
* **Also used for TOPS application!**
2. The **College Board CSS Profile** is an additional financial disclosure form required by many selective admission schools
3. Some institutions may require an additional financial aid form specific to the individual university

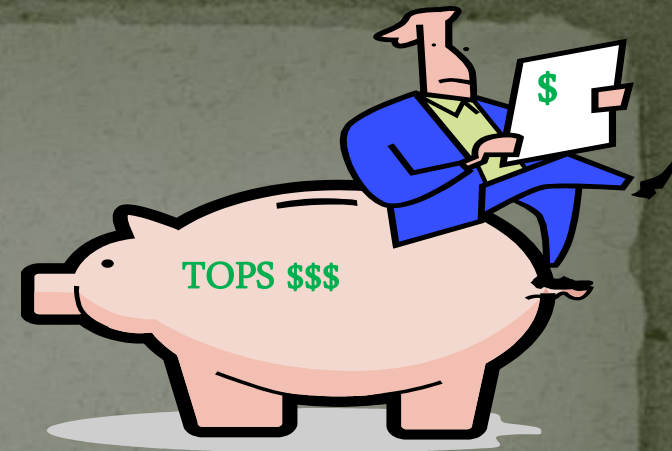
Scholarships -- what, where, how?

- TOPS (apply using FAFSA after Jan 1, Sr year of HS)
- University Scholarships (check with university for deadlines)
- Merit (earned by exceptional performance)
 - General incoming Freshman Awards, academic, or leadership
 - Department Scholarships
 - Athletic
 - Performing Arts (music; dance; drama)
- Need-Based
- Other sources (ongoing through senior year)
 - Free scholarship searches via internet
 - Bulletins from high school counselor
 - National, State, &/or Local civic organizations, businesses, foundations (Kiwanis; Rotary Club; Friends of the Library)



Scholarships (cont'd)

- For some students, the largest scholarship awarded may be the TOPS scholarship.
- There is no easy button, and there are no short answers. 'Full-ride' scholarships are HIGHLY competitive.
- Academic merit scholarships are awarded for outstanding academic achievement. *Is there a separate scholarship application?*
- Athletic scholarships are usually for one year only, but may be renewed annually at the institution's discretion.
- The best results are from those who make a weekly scheduled time to address scholarship searches, applications, essays, etc.
- Ivies (Harvard, Yale, Princeton, Brown, Dartmouth, etc...plus Stanford) do not offer undergraduate academic merit scholarships. They offer need-based financial awards determined from the student's financial need/family income.



Facing Facebook..... aka Social Networking & College Admissions

- There are risks and potentially negative consequences of posting information on social network sites. Make an informed choice about your content. A couple of recent articles about this subject may be located at the following:
- Don't Let Social Networking Sites Sabotage Your Chances of Getting Into College
<http://collegeapps.about.com/od/theartofgettingaccepted/a/Facebook.htm>
- There are ways to use social media and ways not to--make sure you know the differences.
<http://www.usnews.com/education/articles/2010/05/12/5-dos-and-donts-for-college-students-using-social-media?PageNr=1>
- Read what the National Association for College Admission Counseling has to say about social networking and college admissions
<http://www.nacacnet.org/PublicationsResources/steps/Articles/Pages/MySpace.aspx>



GOTOCOLLEGEFAIRS.com
Streamlining the College Fair Experience

Students Register Now

Students

We're making the college fair circuit much more efficient for you. You register ONE TIME, RIGHT HERE, and you get a barcode you can take to any of the automated fairs (click [here](#) for a complete list). Put an end to filling out info cards at every table. Instead, spend your time talking with the schools and finding out what YOU want to know. For more info on how this all works, click [here](#).

REGISTER NOW
REPRINT BARCODE

College Representatives

If you've been on the college fair scene for the last few years, you've undoubtedly noticed our scanners and witnessed how they work. We are increasing the amount of data you can collect while simultaneously giving you more time to connect with your prospects.

- Take a look at our growing list of automated fairs.
- Look into ordering a scanner for yourself that will work at ANY automated fair.
- Learn more about how the whole process works.

Where Will it Work?
How do I Order?
How does it Work?

TRC
UNIVERSITY CENTER
COLLEGE FAIR
AUTOMATION

Home | Student Registration | Order Scanner | Show List | How does it work | FAQ | Testimonials | Contact | Powered by College Fair Automation

Optional time saving tip!

NOTE: There is not a way to print bar codes at the event. Please remember to bring yours!

THE NORTHSHORE COLLEGE CAREER FAIR

Thursday, September 26, 2013
6:00p.m.-8:00p.m.



what

Explore your educational opportunities by attending one of the largest college fairs in Louisiana.

when

Thursday, September 26, 2013
6:00p.m.-8:00p.m.

where

The Pennington Center
on Southeastern Louisiana
University's campus:

1350 N. General Pershing Street
Hammond, LA 70402

Pre-register for a barcode at
lacollegefairs.com



Please contact us at
northshorefair@selu.edu
with any questions.

